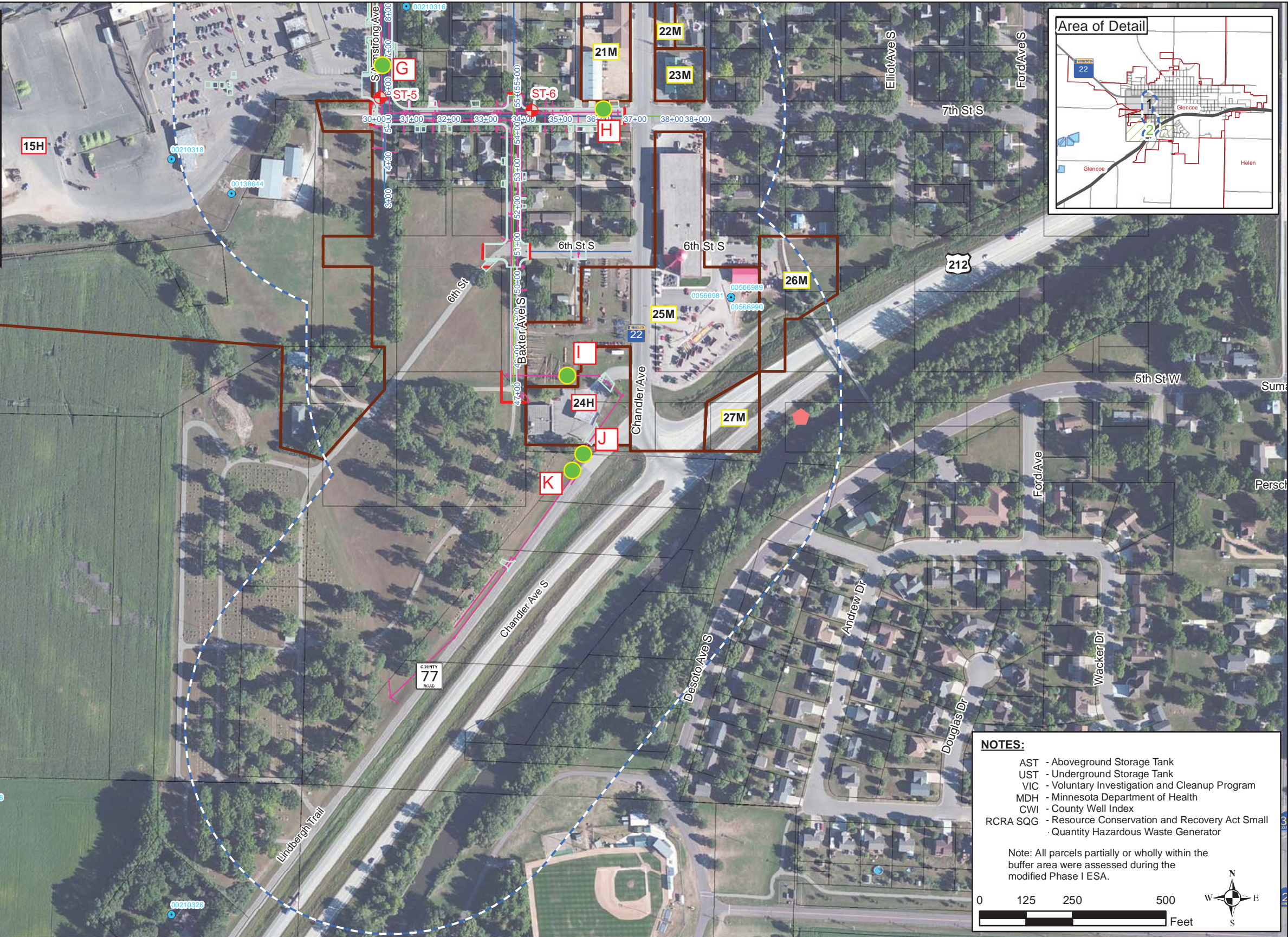


SEH ID	Site Name/Current Use	Rank	Ranking Rationale
15	Seneca Foods Parking Lot	High	Historic rail yard/bulk tanks, closed Leaks/Spills, removed/active USTs/ASTs, filled ponds.
21	Sam's Tire Service	Medium	Auto service (1950s-present), RCRA SQG.
22	Gravestone Shop Retail	Medium	Closed Leak site, historic fuel station, removed UST.
23	Hueser Grain	Medium	Closed Leak, historic fuel station (1930s-1980s), historic closed spill, removed USTs.
24	Go For It! Fuel Station	High	Active Leak source of petroleum plume (extends off-site), fuel station, active USTs.
25	Jungclaus Implement	Medium	Closed Leaks/Spills, ASTs, outdoor storage, 55 gallon drums, RCRA SQG.
26	Pedestrian Bridge, TH 212, Right-of-Way	Medium	Non-native fill (1950s and 1960s).
27	Trunk Highway 212	Medium	Filled creek (1970s).



**Legend**  
*Phase I ESA (SEH, 2015)*

*Design File (GL128000 GM)*

#H

High Risk Ranking

#M

Medium Risk Ranking

#L

Low Risk Ranking

Phase I ESA buffer area

Removed Structure

County Parcels

MDH CWI Located Well

Construction Limits

Construction Alignment

General Design Features

Center Alignment

Utility Improvements

**NOTES:**

AST - Aboveground Storage Tank

UST - Underground Storage Tank

VIC - Voluntary Investigation and Cleanup Program

MDH - Minnesota Department of Health

CWI - County Well Index

RCRA SQG - Resource Conservation and Recovery Act Small Quantity Hazardous Waste Generator

Note: All parcels partially or wholly within the buffer area were assessed during the modified Phase I ESA.

0125250500


Feet

N

W

E

S



3535 VADNAIS CENTER DR.  
ST. PAUL, MN 55110  
PHONE: (651) 490-2000  
FAX: (888) 908-8166  
TF: (800) 325-2055  
www.sehinc.com

Project: Glenc 128000  
Print Date: 1/18/2016

Map by: mbsherrill  
Projection: Mcleod County Coordinates  
Source: MnDOT, MnDNR, MnGEO, MnHD,  
ESRI Baselayers, Mcleod Co.  
and SEH Inc.

**Project Corridor Features**  
Modified Phase I Environmental Site Assessment  
Armstrong Avenue Street and Utility Improvements  
Glencoe, Minnesota  
SAP 226-105-001, 226-115-001

Figure  
2-2

Path: S:\F\UG\Glenc128000\99\_GIS\MXD\PhaseI\Figure02.mxd

This map is neither a legally recorded map nor a survey map and is not intended to be used as one. This map is a compilation of records, information, and data gathered from various sources listed on this map and is to be used for reference purposes only. SEH does not warrant that the Geographic Information System (GIS) Data used to prepare this map are error free, and SEH does not represent that the GIS Data can be used for navigational, tracking, or any other purpose requiring exacting measurement of distance or direction or precision in the depiction of geographic features. The user of this map acknowledges that SEH shall not be liable for any damages which arise out of the user's access or use of data provided.