

MINNESOTA DEPARTMENT OF TRANSPORTATION

CITY OF

GLENCOE, MINNESOTA

CONSTRUCTION PLANS FOR:

GRADING, AGGREGATE BASE, CONCRETE CURB AND GUTTER, BITUMINOUS SURFACING,
STORM SEWER, SANITARY SEWER, WATER MAIN AND CONCRETE SIDEWALK

ARMSTRONG AVENUE STREET AND UTILITY IMPROVEMENTS

SAP 226-105-025
ARMSTRONG AVE FROM 7TH STREET TO T.H. 22

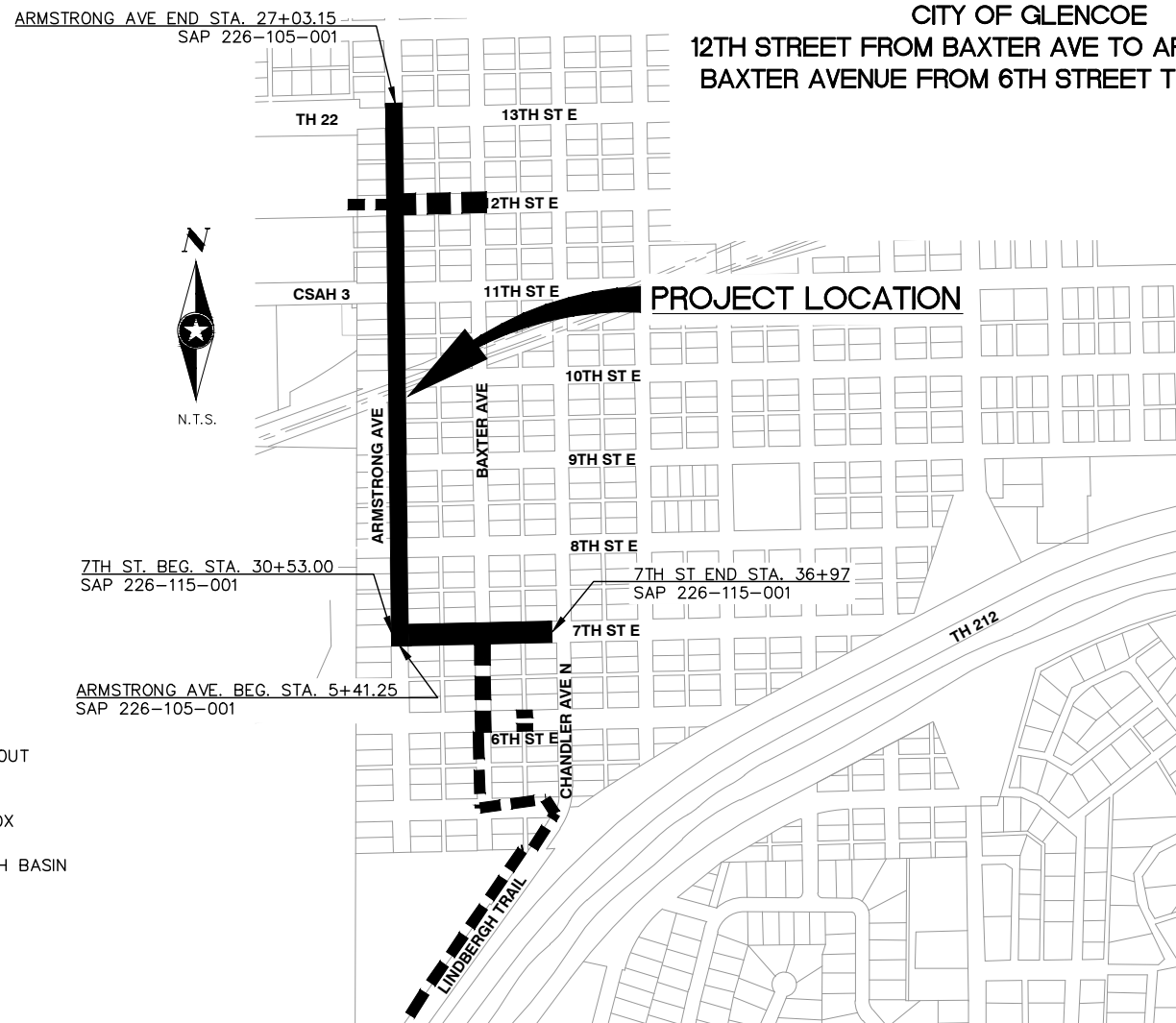
SAP 226-115-025
7TH STREET FROM ARMSTRONG AVE TO T.H. 22

CITY OF GLENCOE

12TH STREET FROM BAXTER AVE TO ARMSTRONG AVE
BAXTER AVENUE FROM 6TH STREET TO 7TH STREET



Know what's below.
Call before you dig.



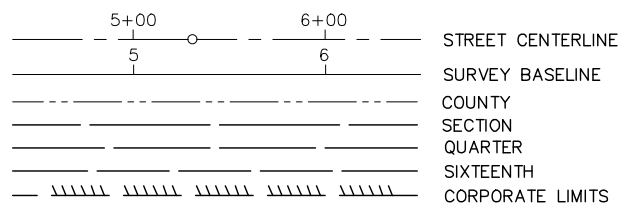
VARIANCE

THIS PROJECT HAS BEEN GRANTED A VARIANCE FROM MINNESOTA RULE 8820.9936 DATED SEPTEMBER 2014, SO AS TO PERMIT A VERTICAL CURVATURE OF 16 MPH IN LIEU OF 30 MPH VERTICAL CURVATURE. THE VARIANCE WAS SIGNED BY MITCH RASMUSSEN STATE AID ENGINEER ON SEPTEMBER 1, 2015.

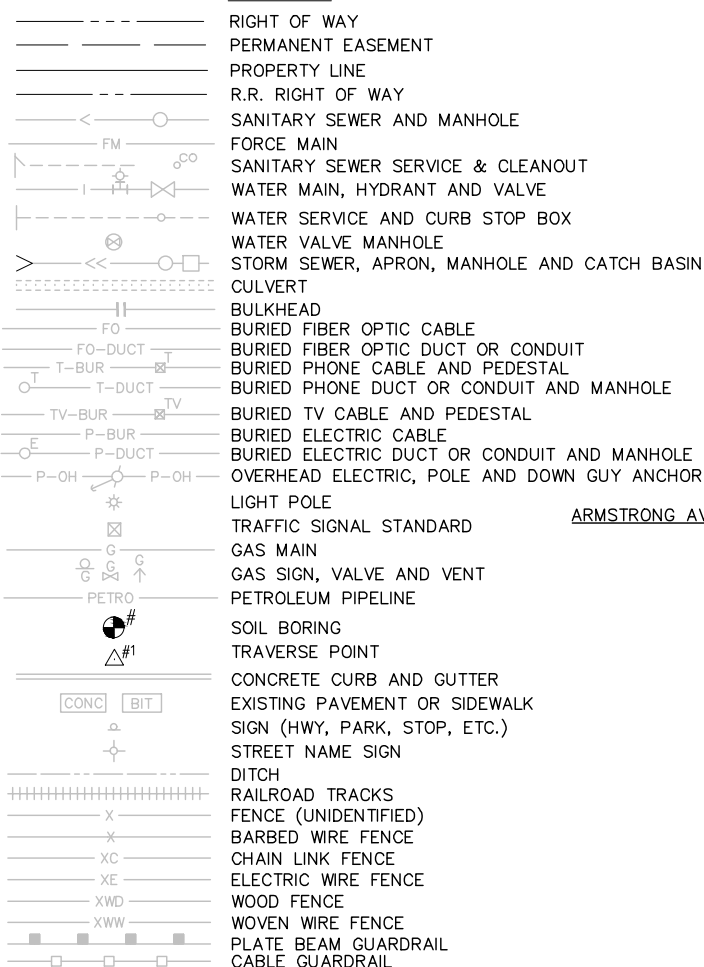
NOTE:
THE SUBSURFACE UTILITY QUALITY INFORMATION IN THIS PLAN IS LEVEL D. THIS UTILITY QUALITY LEVEL WAS DETERMINED ACCORDING TO THE GUIDELINES OF CI/ASCE 38-02 ENTITLED "STANDARD GUIDELINES FOR THE COLLECTION AND DEPICTION OF EXISTING SUBSURFACE UTILITY DATA."

THE CONTRACTOR SHALL CALL THE GOPHER STATE ONE CALL SYSTEM AT 811 BEFORE COMMENCING EXCAVATION.

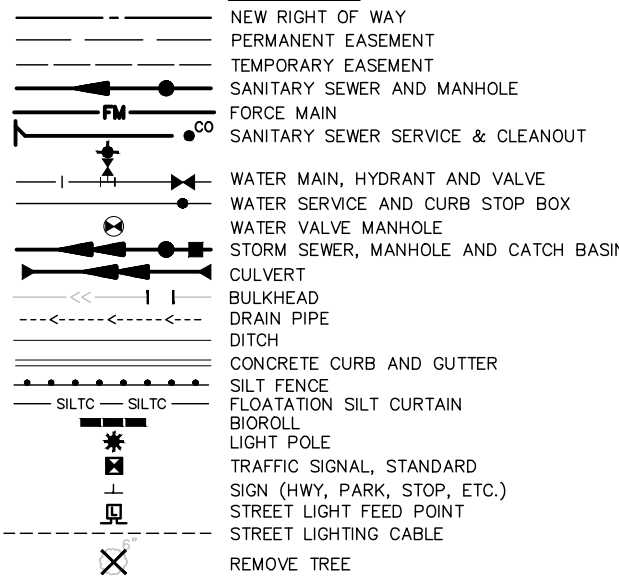
LEGEND



EXISTING



PROPOSED



GOVERNING SPECIFICATIONS

THE 2014 EDITION OF THE MINNESOTA DEPARTMENT OF TRANSPORTATION "STANDARD SPECIFICATIONS FOR CONSTRUCTION" AND THE 2014 EDITION OF THE "MATERIALS LAB SUPPLEMENTAL SPECIFICATIONS FOR CONSTRUCTION" SHALL GOVERN EXCEPT AS MODIFIED BY THE SPECIFICATIONS FOR THIS PROJECT.

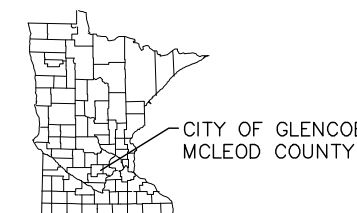
ALL TRAFFIC CONTROL DEVICES AND SIGNING SHALL CONFORM TO THE MMUTCD, INCLUDING "FIELD MANUAL FOR TEMPORARY TRAFFIC CONTROL ZONE LAYOUTS", - CURRENT EDITION.

INDEX

SHEET NO.	DESCRIPTION
1	TITLE SHEET
2	INDEX MAP
3-5	STATEMENT OF ESTIMATED QUANTITIES
6	NOTES
7-9	STRUCTURE SCHEDULE
10-12	STORM SEWER PROFILES
13	CONSTRUCTION STAGING PLAN
14-18	DETAILS
19-20	ACCESS ROUTES
21-25	DETOUR
26-28	TYPICAL SECTIONS
29-33	PEDESTRIAN RAMP DETAILS
34-37	CONCRETE PAVING DETAILS
38-40	ALIGNMENT PLAN
41-48	REMOVALS
49-61	SANITARY SEWER & WATER MAIN PLAN
62-79	STREET & STORM SEWER PLAN
80-82	INTERSECTION DETAILS
83-90	SWPPP
91-96	SIGNING AND STRIPING PLAN
97-100	SIDEWALK AND PEDESTRIAN RAMP PLAN
101-113	CROSS SECTIONS

THIS PLAN CONTAINS 113 SHEETS.

PROJECT LOCATION



DESIGN DESIGNATION

STOPPING SIGHT DISTANCE BASED ON:
3.5' HEIGHT OF EYE 2' HEIGHT OF OBJECT

ARMSTRONG AVENUE	
SAP 226-105-001	
GROSS LENGTH	2161.9 FEET 0.410 MILES
BRIDGE LENGTH	0 FEET 0.000 MILES
EXCEPTION LENGTH	0 FEET 0.000 MILES
NET LENGTH	2161.9 FEET 0.410 MILES
DESIGN	10 TON
DESIGN SPEED	30 M.P.H.
R-VALUE	13
ESALS	330000
EXISTING A.D.T. (2013)	1570
20 YR. PROJECTED A.D.T. (2033)	1110
% HCADT (2033)	7 %
FUNCTIONAL CLASSIFICATION	MINOR COLLECTOR
NO. OF TRAFFIC LANES	2
NO. OF PARKING LANES	2

DESIGN DESIGNATION

STOPPING SIGHT DISTANCE BASED ON:
3.5' HEIGHT OF EYE 2' HEIGHT OF OBJECT

SEVENTH STREET	
SAP 226-115-001	
GROSS LENGTH	644 FEET 0.122 MILES
BRIDGE LENGTH	0 FEET 0.000 MILES
EXCEPTION LENGTH	0 FEET 0.000 MILES
NET LENGTH	644 FEET 0.122 MILES
DESIGN	10 TON
DESIGN SPEED	30 M.P.H.
R-VALUE	13
ESALS	330000
EXISTING A.D.T. (2013)	1200
20 YR. PROJECTED A.D.T. (2033)	1110
% HCADT (2033)	7 %
FUNCTIONAL CLASSIFICATION	MINOR COLLECTOR
NO. OF TRAFFIC LANES	2
NO. OF PARKING LANES	2

RECOMMENDED FOR APPROVAL:

GLENCOE CITY ENGINEER _____ DATE _____

RECOMMENDED FOR APPROVAL:

DISTRICT STATE AID ENGINEER: REVIEWED FOR COMPLIANCE WITH STATE AID RULES/POLICY _____ DATE _____

RECOMMENDED FOR APPROVAL:

APPROVED FOR STATE AID FUNDING _____ DATE _____
STATE AID ENGINEER

GLENCOE, MINNESOTA



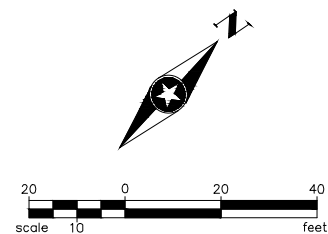
I HEREBY CERTIFY THAT THIS PLAN WAS PREPARED BY ME OR UNDER MY DIRECT SUPERVISION AND THAT I AM A DULY LICENSED PROFESSIONAL ENGINEER UNDER THE LAWS OF THE STATE OF MINNESOTA.

Signature: *Justin L. Black* JUSTIN L. BLACK, PE
Date: 12/16/15 Lic. No. 43373

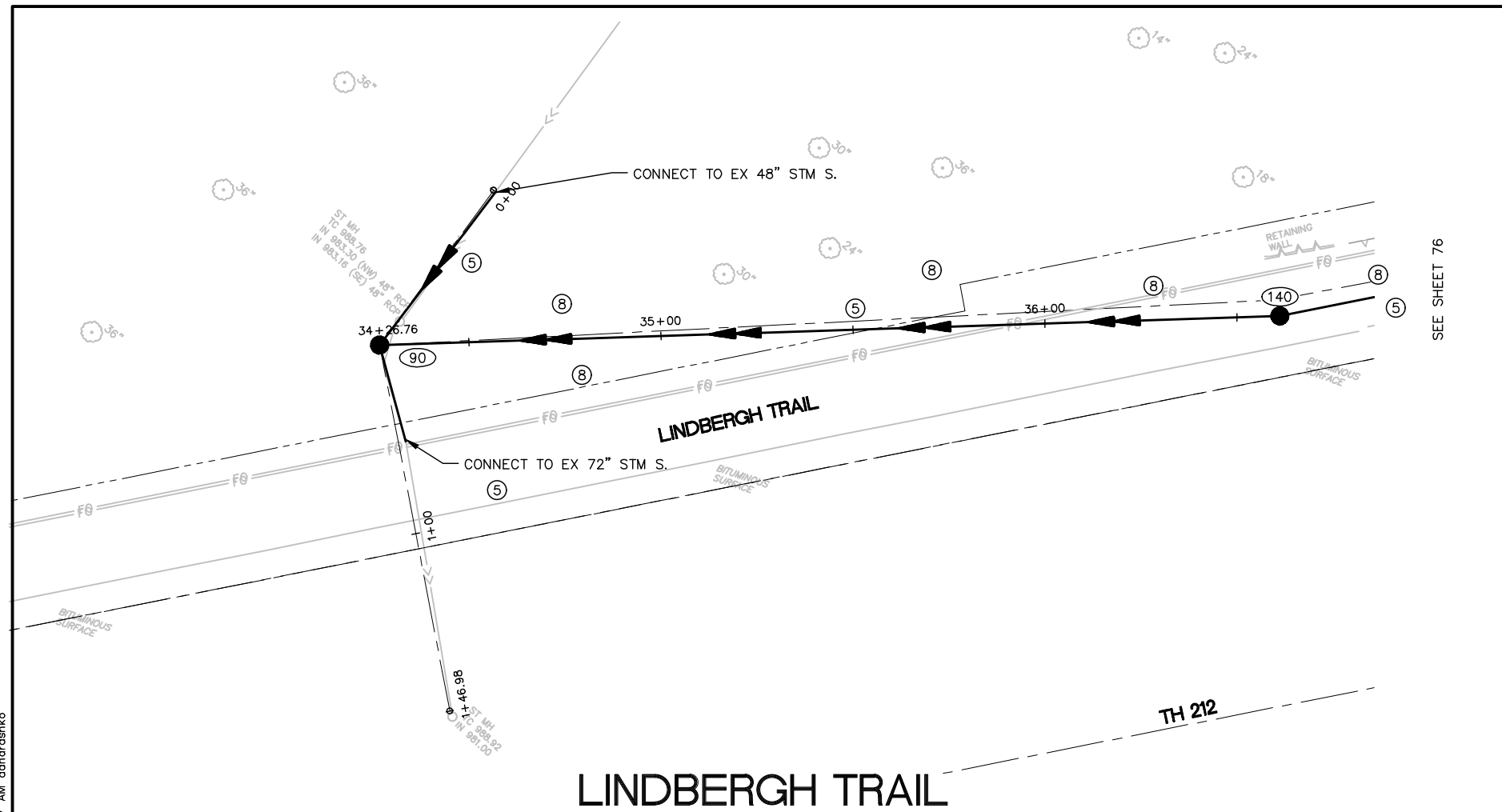
FILE NO.
GLENC
128000

1
113

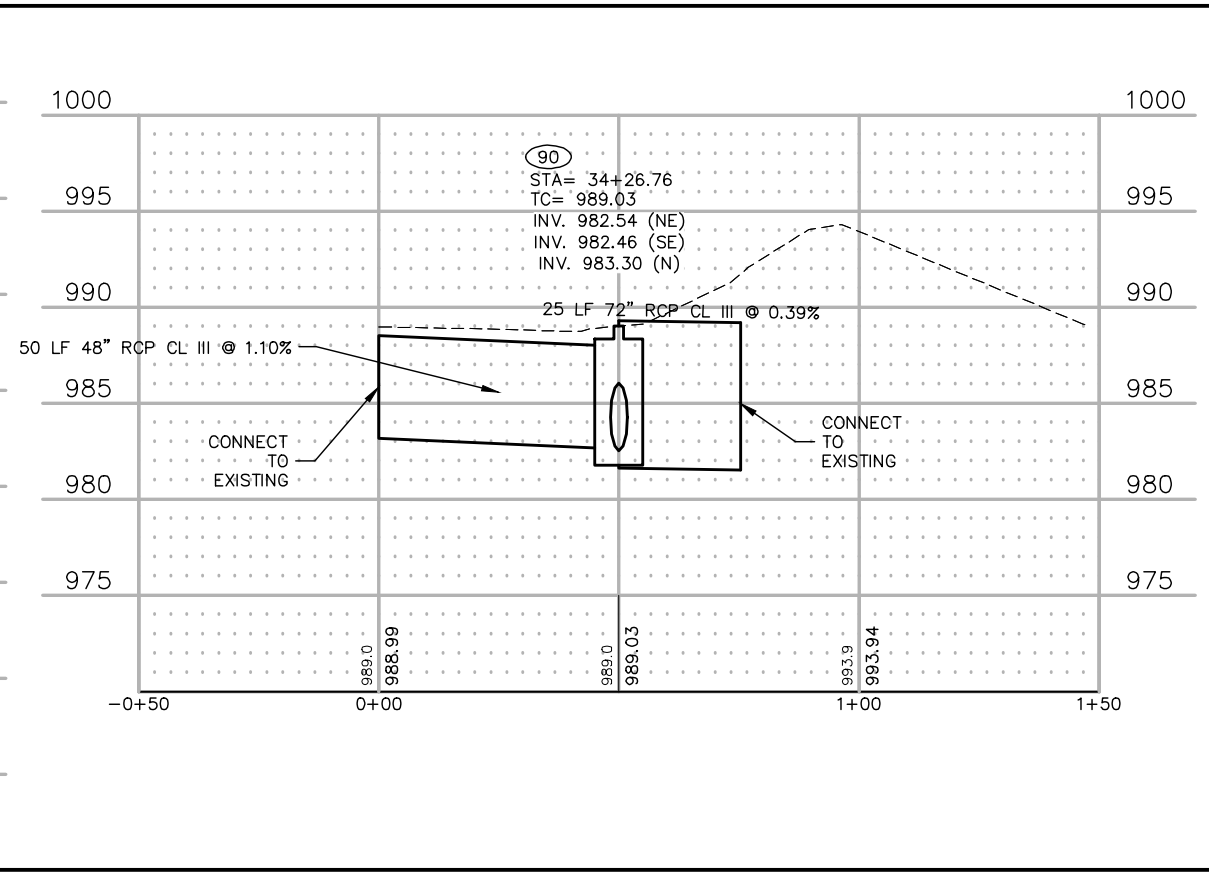
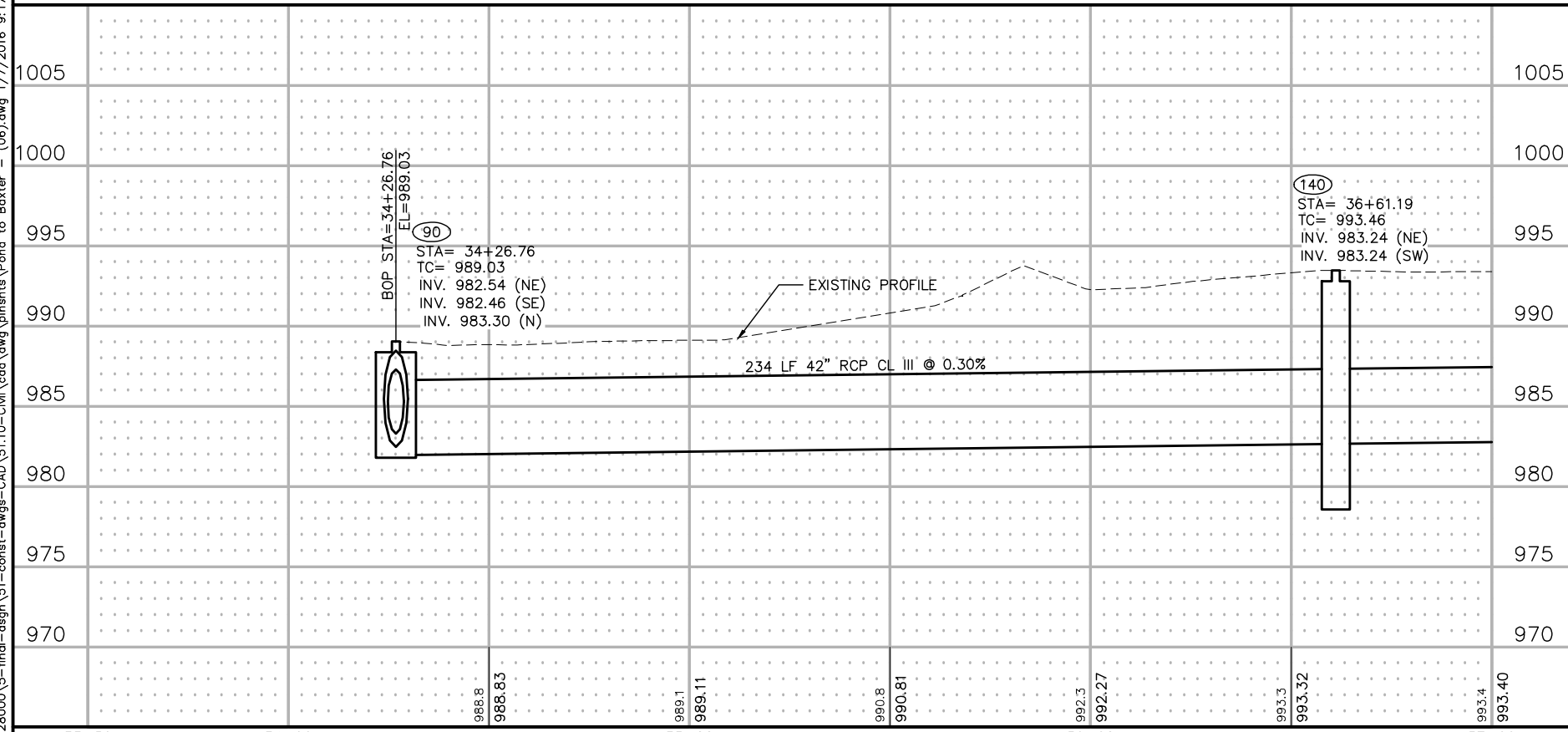
SAP 226-105-001 SAP 226-115-001



- ① CONST. 4" CONC. SIDEWALK
 - ② CONST. 7" CONC. ALLEY APRON/ COMM. DRIVE
 - ③ CONST. 7" CONC. RESIDENTIAL DRIVEWAY APRON
 - ④ CONST B618 CURB & GUTTER
 - ⑤ CONST. STORM SEWER
 - ⑥ CONST. DRAIN TILE (SEE TYP. SEC.)
 - ⑦ CONST. PEDESTRIAN RAMP
 - ⑧ SEED DISTURBED AREAS
- DENOTES DRIVEWAY REPLACEMENT (REPLACE TO EXISTING CONDITION UNLESS OTHERWISE NOTED.) (SEE SHEET 7)
- DENOTES CONCRETE SURFACING
- DENOTES BITUMINOUS SURFACING



SEE SHEET 76

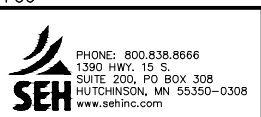


P:\FUG\Glencoe\128000\5-final-dsgn\51-const-dwgs-CAD\51.10-Civil\cod\dwg\plansh\51-10-Const.dwg 1/7/2016 9:17 AM andrashko

DRAWN BY: SJP, AKA, AJG				
DESIGNER: CES, JLB				
CHECKED BY: JLB				
DESIGN TEAM	NO.	BY	DATE	REVISIONS

I HEREBY CERTIFY THAT THIS PLAN WAS PREPARED BY ME OR UNDER MY DIRECT SUPERVISION AND THAT I AM A DULY LICENSED PROFESSIONAL ENGINEER UNDER THE LAWS OF THE STATE OF MINNESOTA.

Justin L. Black
 JUSTIN L. BLACK, PE
 Date: 12/16/15 Lic. No. 43373

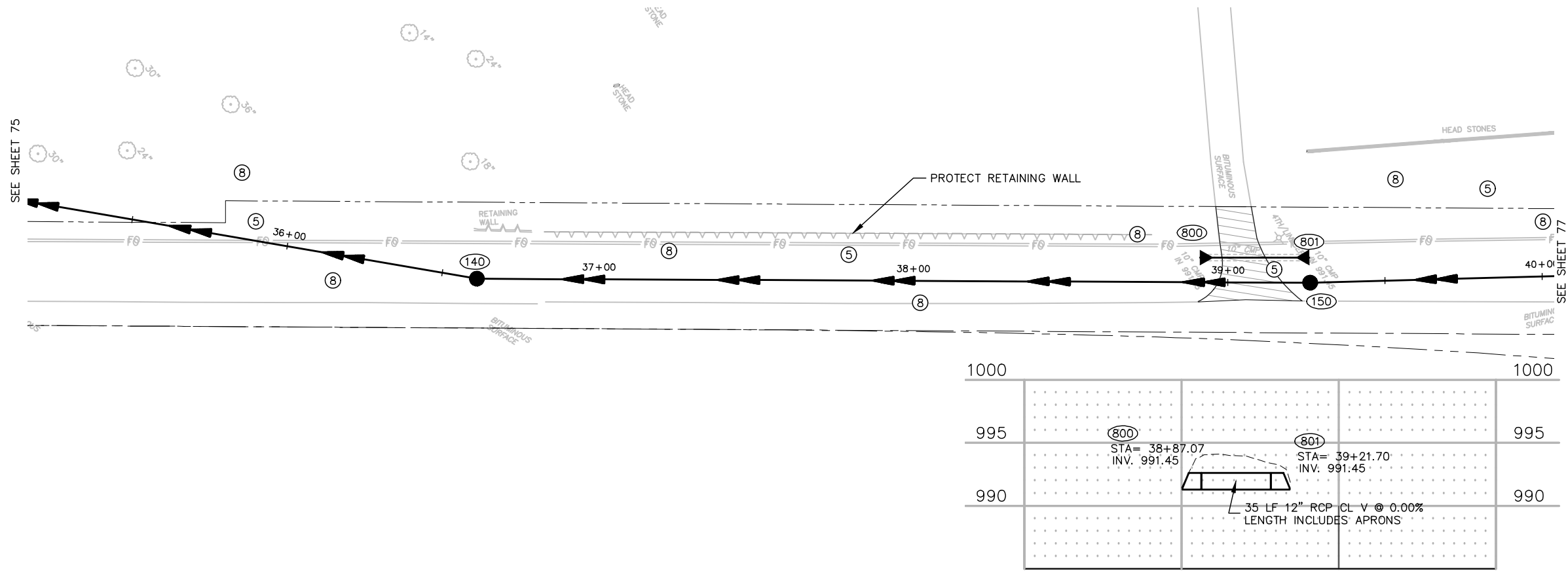


ARMSTRONG AVENUE IMPROVEMENTS PROJECT
 GLENCOE, MINNESOTA

STORM SEWER AND STREET PROFILE LINDBERGH TRAIL
 SAP 226-105-001 SAP 226-115-001

FILE NO. **75**
 GLENC 128000
113

P:\F\G\Glencoe\128000\5-final-dsgn\51-conest-dwgs-CAD\51.10-Civil\cod\dwg\planshfts\Pond to Baxter - (07).dwg 1/7/2016 9:27 AM candreshko



SEE SHEET 75

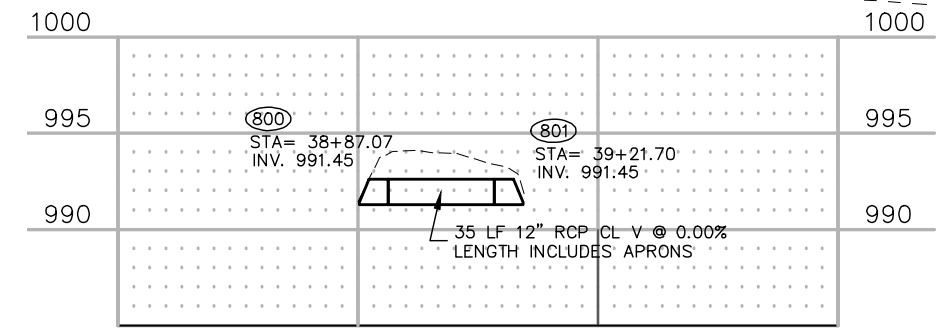
SEE SHEET 77

20 0 20 40
scale 10 feet

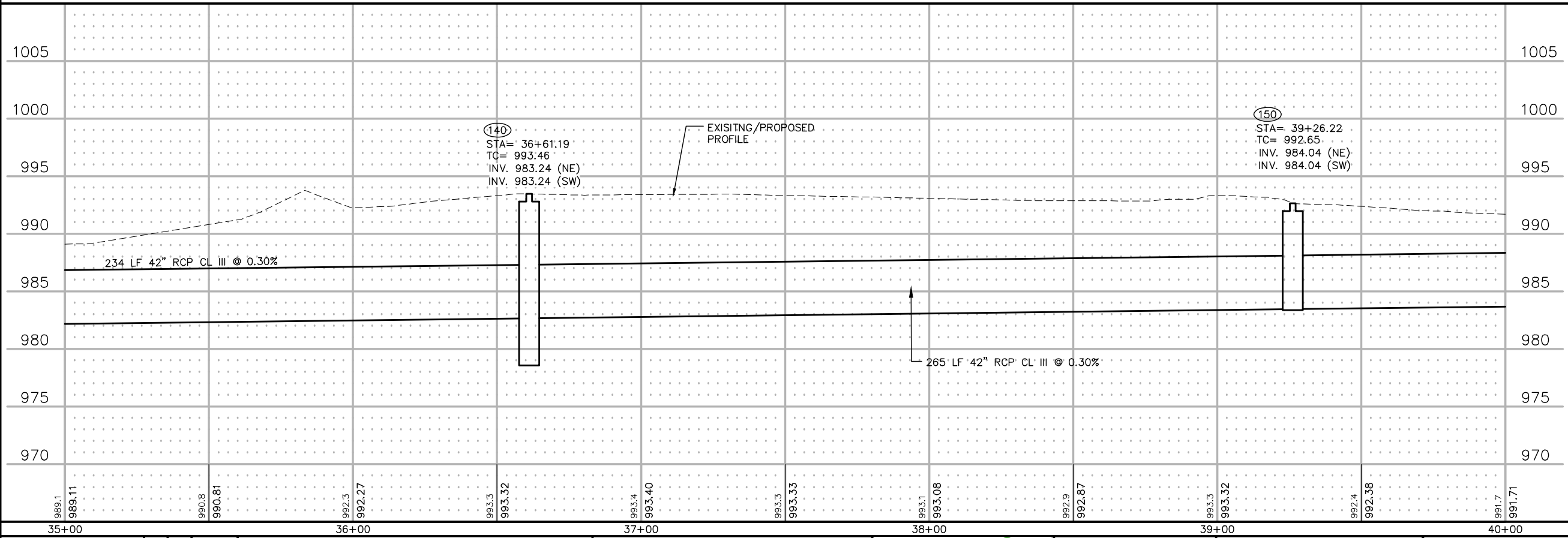
SEE SHEET 47 FOR REMOVALS

- ① CONST. 4" CONC. SIDEWALK
- ② CONST. 7" CONC. ALLEY APRON/ COMM. DRIVE
- ③ CONST. 7" CONC. RESIDENTIAL DRIVEWAY APRON
- ④ CONST B618 CURB & GUTTER
- ⑤ CONST. STORM SEWER
- ⑥ CONST. DRAIN TILE (SEE TYP. SEC.)
- ⑦ CONST. PEDESTRIAN RAMP
- ⑧ SEED DISTURBED AREAS

DENOTES DRIVEWAY REPLACEMENT (REPLACE TO EXISTING CONDITION UNLESS OTHERWISE NOTED.) (SEE SHEET 7)
 DENOTES CONCRETE SURFACING
 DENOTES BITUMINOUS SURFACING



LINDBERGH TRAIL

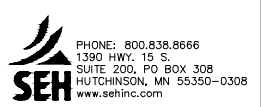


DRAWN BY: SJP, AKA, AJG
 DESIGNER: CES, JLB
 CHECKED BY: JLB

NO.	BY	DATE	REVISIONS

I HEREBY CERTIFY THAT THIS PLAN WAS PREPARED BY ME OR UNDER MY DIRECT SUPERVISION AND THAT I AM A DULY LICENSED PROFESSIONAL ENGINEER UNDER THE LAWS OF THE STATE OF MINNESOTA.

Justin L. Black
 JUSTIN L. BLACK, PE
 Date: 12/16/15 Lic. No. 43373

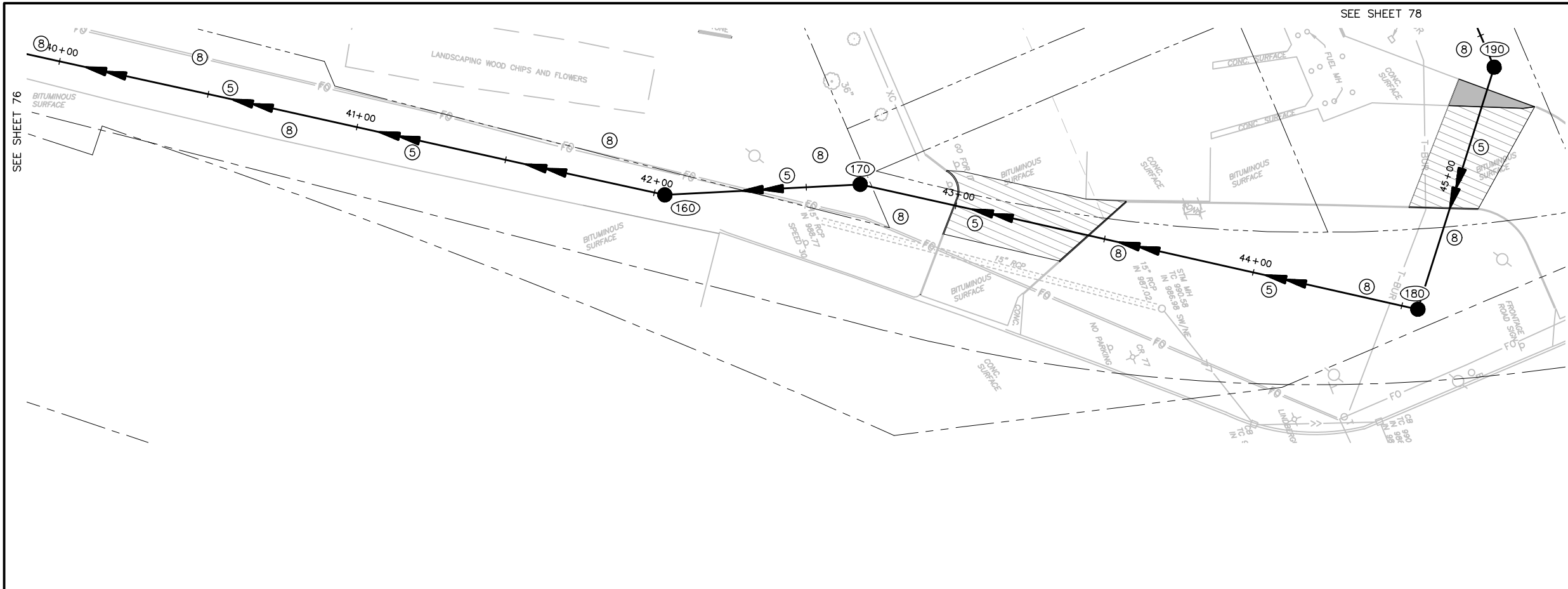


ARMSTRONG AVENUE
 IMPROVEMENTS PROJECT
 GLENCOE, MINNESOTA

STORM SEWER AND STREET PROFILE
 LINDBERGH TRAIL
 SAP 226-105-001 SAP 226-115-001

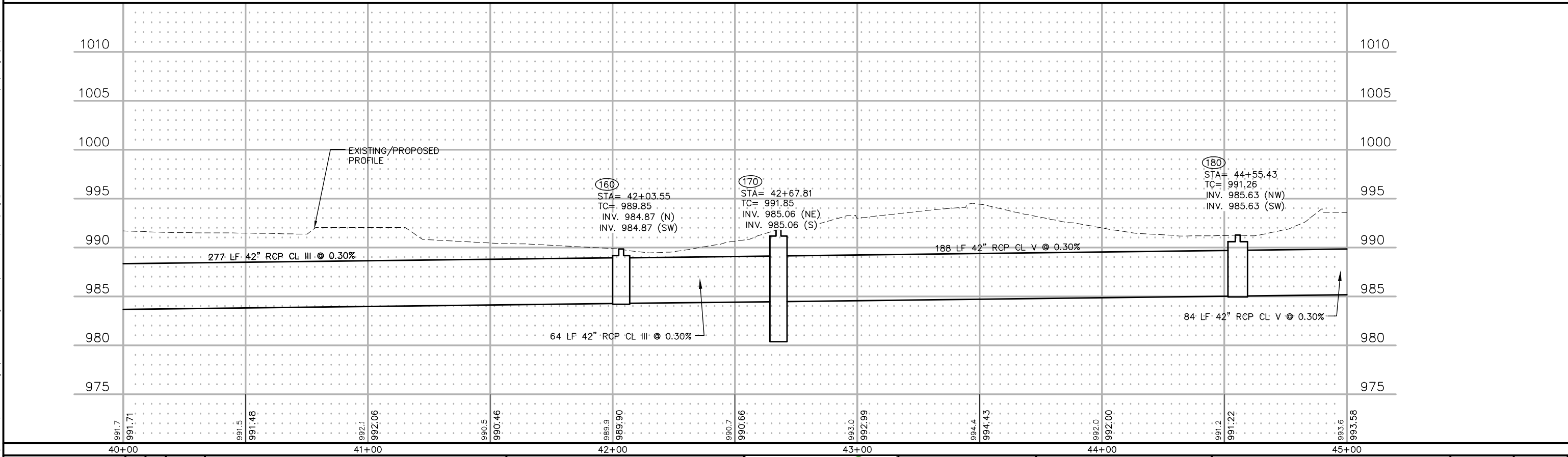
FILE NO.
 GLENC 128000

76
 113



- SEE SHEET 47 FOR REMOVALS
- ① CONST. 4" CONC. SIDEWALK
 - ② CONST. 7" CONC. ALLEY APRON/ COMM. DRIVE
 - ③ CONST. 7" CONC. RESIDENTIAL DRIVEWAY APRON
 - ④ CONST B618 CURB & GUTTER
 - ⑤ CONST. STORM SEWER
 - ⑥ CONST. DRAIN TILE (SEE TYP. SEC.)
 - ⑦ CONST. PEDESTRIAN RAMP
 - ⑧ SEED DISTURBED AREAS
- DENOTES DRIVEWAY REPLACEMENT (REPLACE TO EXISTING CONDITION UNLESS OTHERWISE NOTED.) (SEE SHEET 7)
 - DENOTES CONCRETE SURFACING
 - DENOTES BITUMINOUS SURFACING SEE SHEET 28 INSET D5

LINDBERGH TRAIL

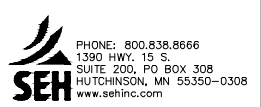


P:\F\G\Glencoe\128000\5-final-dsgn\51-const-dwgs-CAD\51.10-Civil\cod\dwg\plans\15-Pond to Baxter - (08).dwg 1/5/2016 3:27 PM oandroszko

DRAWN BY: SJP, AKA, AJG				
DESIGNER: CES, JLB				
CHECKED BY: JLB				
DESIGN TEAM	NO.	BY	DATE	REVISIONS

I HEREBY CERTIFY THAT THIS PLAN WAS PREPARED BY ME OR UNDER MY DIRECT SUPERVISION AND THAT I AM A DULY LICENSED PROFESSIONAL ENGINEER UNDER THE LAWS OF THE STATE OF MINNESOTA.

Justin L. Black
JUSTIN L. BLACK, PE
Date: 12/16/15 Lic. No. 43373



ARMSTRONG AVENUE IMPROVEMENTS PROJECT
GLENCOE, MINNESOTA

STORM SEWER AND STREET PROFILE
LINDBERGH TRAIL
SAP 226-105-001 SAP 226-115-001

FILE NO. **77**
GLENCOE 128000
113