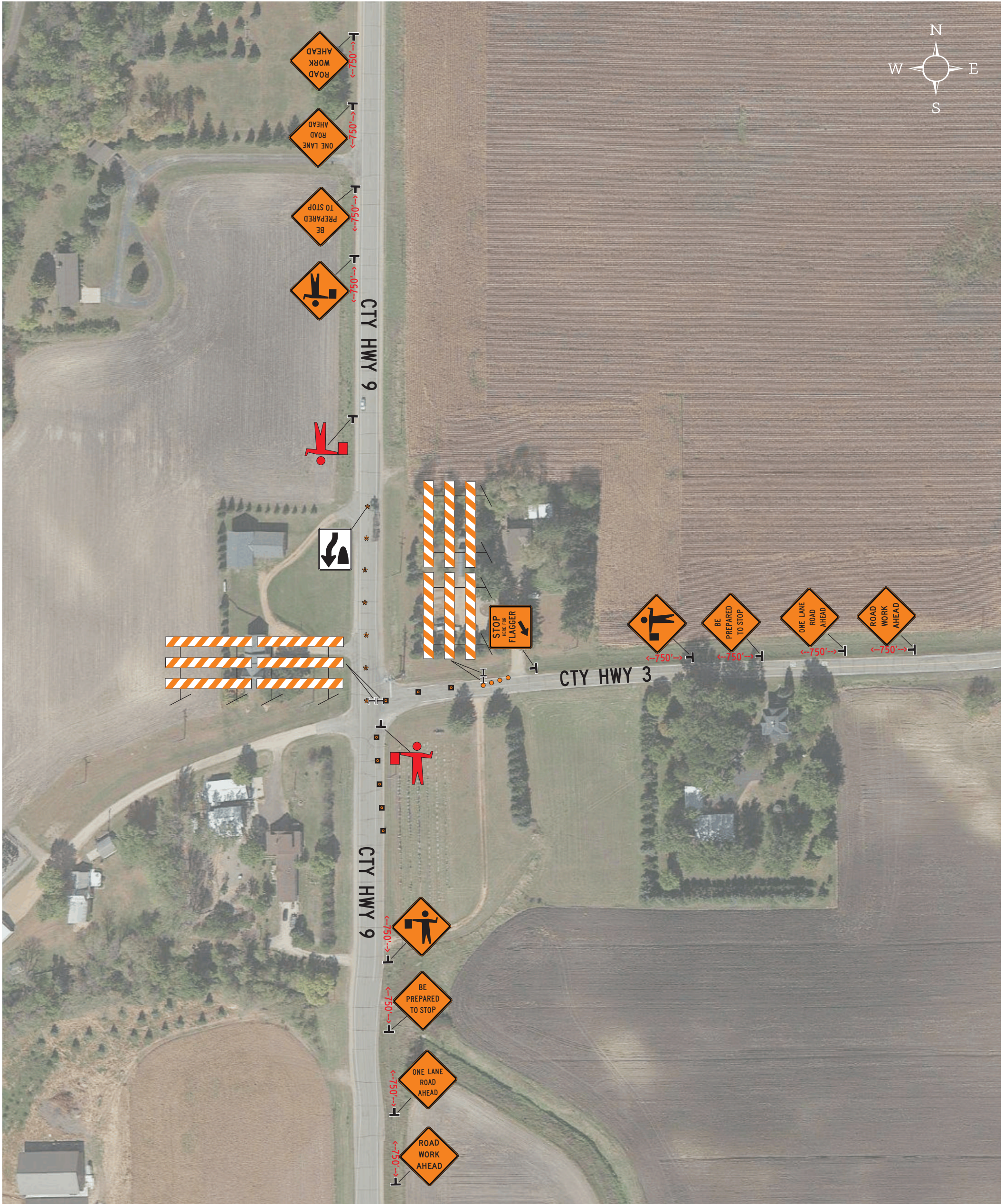


XCEL ENERGY
 TRAFFIC CONTROL PLAN
 FLAGGER SETUP
 CTY HWY 9 & CTY HWY 3
 MCLEOD COUNTY, MN



- * - REFLECTIVE GRABBER CONES
- - REFLECTIVE DRUMS
- ◐ - REFLECTIVE CONES

DRAWN BY: JOEL TRUCKENBROD
 DESIGN DATE: 2/13/13